

**Would You Like to Contribute or Be Featured in Your NEWSLETTER?**

Please do let us know if you have a special offer, an announcement or an article you'd like to share with your fellow Members.

Perhaps you have recently won an award or can offer some business advice - or maybe you'd like to put your business in the \*Spotlight\*.

We'd love to hear from you!

**PLEASE SEND YOUR CONTRIBUTIONS TO**

[info@leatherheadchamber.co.uk](mailto:info@leatherheadchamber.co.uk)

**YOUR CHAMBER**

CLICK BELOW TO GO STRAIGHT THERE

**EVENTS DIARY**

[Your Member Benefits](#)

[Member-to-Member Offers](#)

[Membership Directory](#)

[Your Board of Directors](#)

**WELCOME**

TO OUR NEW MEMBERS

**Mars Management Consultancy Ltd**

Management Consultancy, based in Leatherhead.

**Mr Muhammad Amir Shahzad**

**Director**

[Email Muhammad](#)

**New Level Results**

Business Coaching, based in Fetcham.

**Mr Jeff Hitchins**

**Associate**

**Chamber Events**

**SPEED NETWORKING EVENING**

**Wednesday 6th July**

**5.00pm to 7.00pm**

The Mezz Bar, Leatherhead Theatre

[CLICK HERE FOR MORE](#)

\*\*\*\*\*

**BUSINESS BREAKFAST**

**Wednesday 20th July**

**7.30am to 9.30am**

The Police Federation, Leatherhead

[CLICK HERE FOR MORE](#)

**Member Events**

**Surrey Hills**

**Networking Evening**

**Thursday 28th July**

**5.30pm to 7.30pm**

The Cock Inn, Headley

Surrey Hills Networking is a new, monthly, networking event for local businesses, jointly hosted by Chamber Member, The Cock Inn.

[CLICK HERE FOR MORE](#)

\*\*\*\*\*

**Lunchtime Workshop**

**Tuesday 12th July**

**1.00pm to 2.00pm**

The Axis Centre, Leatherhead

A FREE lunchtime workshop on the topic of Care Home Fees, run by Chamber Member, Julie West Solicitor.

[CLICK HERE FOR MORE](#)

**PRUDENTIAL RIDE LONDON**

The Prudential RideLondon festival of cycling is just over a month away - 30-31 July.

From 4 July, leaflets about the Prudential RideLondon road closures will be distributed around the route in London and Surrey. Information will include timings and maps.

Road closure information for this year's Prudential RideLondon festival of cycling is now available online.

Specific local access information for a number of communities in Surrey is also available online now on both our [Road Closures](#) page and on the [Community Info](#) page.

If you have a specific access question - about a social care or medical visit, a wedding or other planning needs - please contact our helpdesk on 0345 894 9773 (Monday to Friday 09:00-17:00), or via [email](#).

The Prudential RideLondon [Business Directory](#) is now open for registration, offering local businesses a free opportunity to advertise.

More than 300 businesses featured in the directory in 2015. Now live for 2016, the directory will run through until 9 September.

The Prudential RideLondon Business Directory is a great way to advise customers when and where to shop with you during the festival.

The directory will be online six weeks before and six weeks after the event weekend.

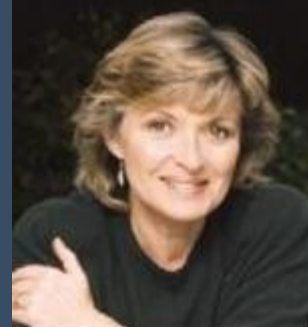
There is still time to register - all you have to do is complete the [online form](#).

**James Taylor**  
Activation & Community Engagement Manager  
020 7902 0200 ext.203

Welcome to your June Newsletter - we hope you'll enjoy reading it. Newsletters are circulated during the last week of each month - please do **let us know** if you have colleagues who would also like to receive a regular copy.

**Famous Faces Lend Support To Theatre Fundraising Appeal**

Some of the country's best-loved actors have pledged their support to the **Leatherhead Theatre's** on-going **Fund Raising Appeal**.



**Tom Conti** (*Shirley Valentine*), **Hannah Gordon** (*Upstairs, Downstairs*), **Hayley Mills** (*Wild at Heart*) and **Simon Williams** (*Holby City*) all know the theatre very well having performed in plays when the Leatherhead Theatre was operating as the **Thorndike Theatre**.

The charismatic Scottish actor **Tom Conti** delighted Thorndike audiences when he appeared alongside American actress **Sharon Gless** of *Cagney and Lacey* fame in Neil Simon's play *Chapter Two*. This Olivier award-winning actor has to be one of our hardest working thespians.

Surrey resident **Hannah Gordon's** first memory of the theatre is when she performed in the Gala Opening Performance of *The Lion in Winter*. The performance was attended by HRH Princess Margaret in 1969 when the Thorndike first opened.

**Hayley Mills'** distinguished acting career began in 1959 with roles in *Tiger Bay* and *Pollyanna*. Hayley made a number of stage appearances in Leatherhead, including *Fallen Angels*, in which she starred alongside her equally talented sister Juliet Mills.

**Simon Williams** appeared in a number of productions at the Thorndike including a play written by himself called *Switchback*. When agreeing to support the appeal Simon wrote to the theatre saying 'I have many happy memories of the building and town'.

*Photo credit for Simon Williams photograph: Rocco Redondo*

One of the town's most treasured landmarks, The **Leatherhead Theatre** is a fine example of the post-war modern architectural style referred to as 'Brutalism' and deserving of its Grade II listed status.

The **Leatherhead Theatre** is managed by the **Leatherhead Revival Trust**, a charitable trust that has been running the theatre since 2001. Last year the **Leatherhead Revival Trust** launched a fund raising appeal to raise £100,000.

The **Leatherhead Theatre does not receive any funding** from the Arts Council, trusts or the local councils. The theatre is entirely self-funded through ticket sales and the generosity of the general public. Therefore raising funds is essential to the upkeep and running of the theatre.

To date, the Appeal has raised £66,000. In the latter part of 2016 the **Leatherhead Revival Trust** will be launching phase two of the Appeal with a series of fundraising events including a **Piano Recital** by **Phillip Dyson**, a **Christmas Concert** plus a **Gala Luncheon** and **Auction**.

**For more information, please contact:**

**Samantha Watson**

**Leatherhead Theatre**

**01372 365 141**

[samantha@the-theatre.org](mailto:samantha@the-theatre.org)

[www.theleatherheadtheatre.org](http://www.theleatherheadtheatre.org)

Facebook: The Leatherhead Theatre

Twitter @lhdtheatre

**Gatwick Diamond Initiative**

**Quarterly Business Survey**



You are invited to participate in some important business research commissioned by the Gatwick Diamond Initiative - the latest **Gatwick Diamond Initiative Quarterly Business Survey**.

This regular online survey helps us to identify business issues and trends and to respond constructively to the changing economic environment. In this survey, we would like to explore your experience of digital and e-commerce issues. It will take approximately 5-10 minutes to complete.

I will be grateful if you can complete the **Online Questionnaire** and circulate it among your associates.

The final closing date for responses is **FRIDAY 8<sup>th</sup> JULY**. Anonymity will be preserved unless informed consent has been given.

Thank you for your assistance.

**Lauren Read**

**PR Consultant**

**Prowse & Company Ltd**

**Tel: 01372 363 386**

[lauren@prorowse.co.uk](mailto:lauren@prorowse.co.uk)

*Issued on behalf of Jeff Alexander  
Executive Director*

